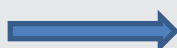
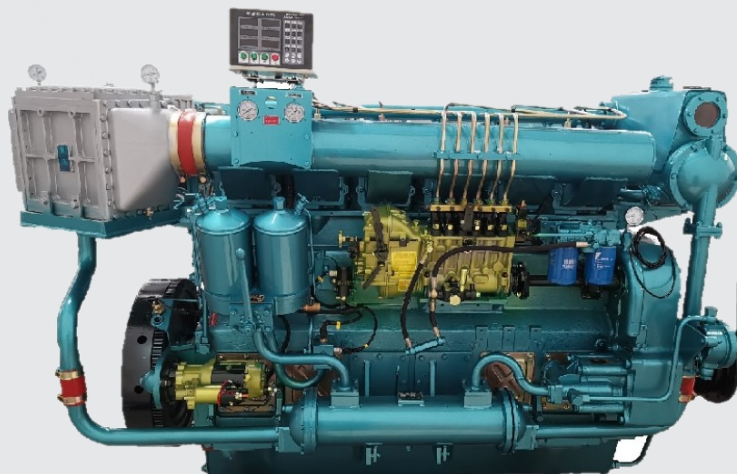




Z6170 Series Diesel Engine

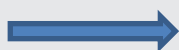
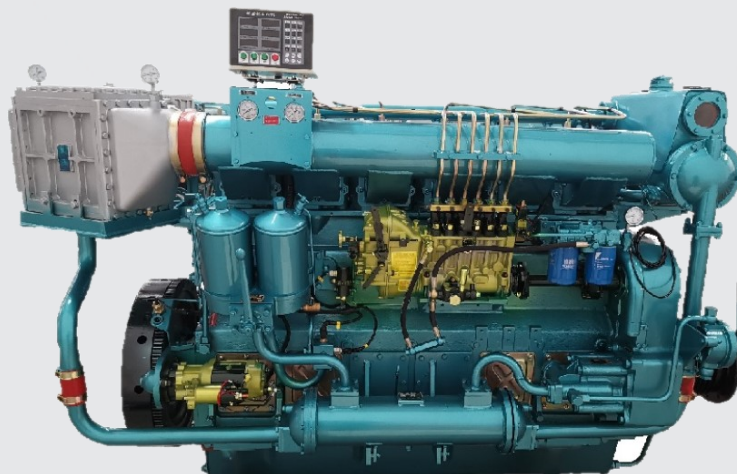


Technical parameter

| Name | Unit | Technical specifications | | | | | |
|----------------------------|--------|--|---------------------------|---------------------------|---------------------------|---------------------------|---------------------------|
| Model | / | Z6170ZLC Z6170ZLCZ | Z6170ZLC-1 Z6170ZLCZ-1 | Z6170ZLC-2 Z6170ZLCZ-2 | Z6170ZLC-3 Z6170ZLCZ-3 | Z6170ZLC-4 Z6170ZLCZ-4 | Z6170ZLC-5 Z6170ZLCZ-5 |
| Type | / | Inline, four stroke, direct injection, exhaust turbo charging, Air cooling | | | | | |
| Cylinder NO. | / | 6 | | | | | |
| Cylinder diameter | mm | 170 | | | | | |
| Piston stroke | mm | 200 | | | | | |
| Compression ratio | / | 14.5 | | | | | |
| Continuous speed | rpm | 1000 | 1000 | 1000 | 1200 | 1200 | 1200 |
| Continuous power | kW | 300 | 220 | 258 | 330 | 350 | 260 |
| Minimum speed stable work | rpm | 400 | 400 | 400 | 540 | 540 | 540 |
| Average speed of piston | m/s | 6.67 | 6.67 | 6.67 | 8.0 | 8.0 | 8.0 |
| Mean effective pressure | MPa | 1.322 | 0.969 | 1.137 | 1.212 | 1.285 | 0.955 |
| Fuel consumption | g/kW.h | 196 | | | | | |
| Oil consumption | g/kW.h | 1.0 | | | | | |
| Direction of rotation | / | Turn right is clockwise, Turn left is counterclockwise | | | | | |
| Starting way | / | Air motor, electric motor, double motor start | | | | | |
| Overall Dimensions (L*W*H) | mm | 2580×1340×1830 | | | | | |
| Lifting height of cylinder | mm | 1260 | | | | | |
| Whole machine quality | kg | 3200 | | | | | |



Z6170 Series Diesel Engine

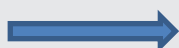
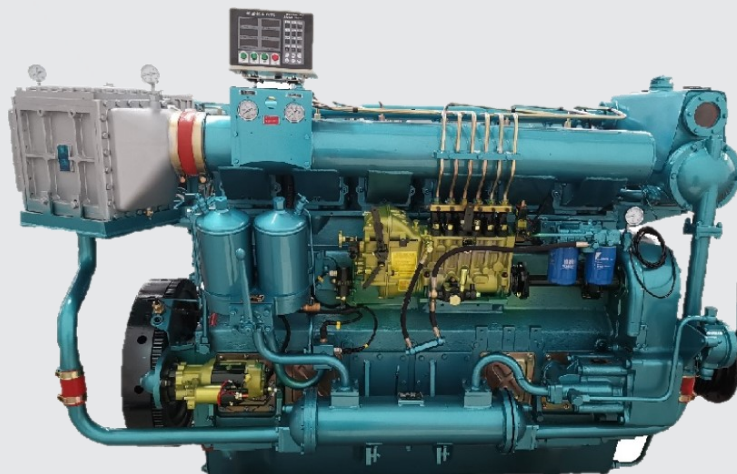


Technical paramater

| Name | Unit | Technical specifications | | | | |
|----------------------------|--------|--|---------------------------|---------------------------|---------------------------|-----------------------------|
| Model | / | Z6170ZLC-6 Z6170ZLCZ-6 | Z6170ZLC-7 Z6170ZLCZ-7 | Z6170ZLC-8 Z6170ZLCZ-8 | Z6170ZLC-9 Z6170ZLCZ-9 | Z6170ZLC-12 Z6170ZLCZ-12 |
| Type | / | Inline, four stroke, direct injection, exhaust turbo charging, Air cooling | | | | |
| Cylinder NO. | / | 6 | | | | |
| Cylinder diameter | mm | 170 | | | | |
| Piston stroke | mm | 200 | | | | |
| Compression ratio | / | 14.5 | | | | |
| Continuous speed | rpm | 1200 | 1500 | 1500 | 1350 | 1300 |
| Continuous power | kW | 300 | 400 | 450 | 400 | 350 |
| Minimum speed stable work | rpm | 540 | 670 | 670 | 600 | 580 |
| Average speed of piston | m/s | 8.0 | 10 | 10 | 9.0 | 8.67 |
| Mean effective pressure | MPa | 1.101 | 1.322 | 1.322 | 1.306 | 1.186 |
| Fuel consumption | g/kW.h | 196 | | | | |
| Oil consumption | g/kW.h | 1.0 | | | | |
| Direction of rotation | / | Turn right is clockwise, Turn left is counterclockwise | | | | |
| Starting way | / | Air motor, electric motor, double motor start | | | | |
| Overall Dimensions (L*W*H) | mm | 2580×1340×1830 | | | | |
| Lifting height of cylinder | mm | 1260 | | | | |
| Whole machine quality | kg | 3200 | | | | |



Z6170 Series Diesel Engine

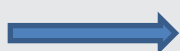
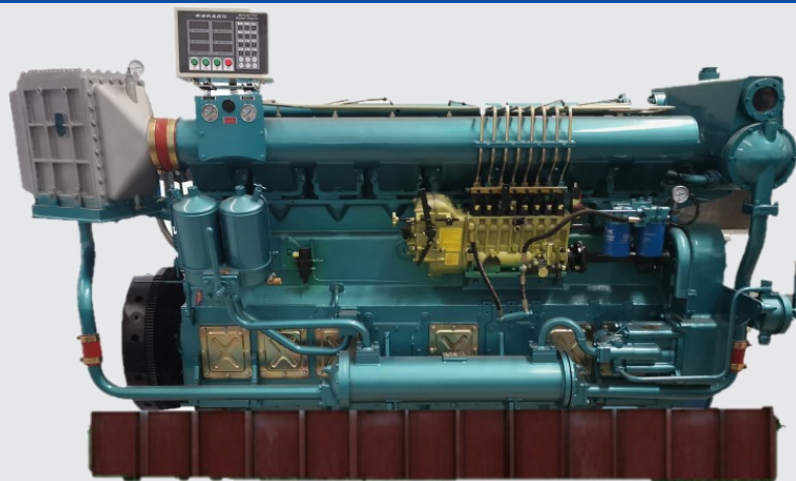


Technical parameter

| Name | Unit | Technical specifications | | | | |
|----------------------------|--------|--|-----------------------------|-----------------------------|-----------------------------|-----------------------------|
| Model | / | Z6170ZLC-14 Z6170ZLCZ-14 | Z6170ZLC-18 Z6170ZLCZ-18 | Z6170ZLC-19 Z6170ZLCZ-19 | Z6170ZLC-20 Z6170ZLCZ-20 | Z6170ZLC-35 Z6170ZLCZ-35 |
| Type | / | Inline, four stroke, direct injection, exhaust turbo charging, Air cooling | | | | |
| Cylinder NO. | / | 6 | | | | |
| Cylinder diameter | mm | 170 | | | | |
| Piston stroke | mm | 200 | | | | |
| Compression ratio | / | 14.5 | | | | |
| Continuous speed | rpm | 1200 | 1200 | 1000 | 1350 | 1500 |
| Continuous power | kW | 250 | 385 | 330 | 430 | 495 |
| Minimum speed stable work | rpm | 540 | 540 | 400 | 600 | 670 |
| Average speed of piston | m/s | 8.0 | 8.0 | 6.67 | 9.0 | 10.0 |
| Mean effective pressure | MPa | 0.918 | 1.414 | 1.454 | 1.404 | 1.454 |
| Fuel consumption | g/kW.h | 196 | | | | |
| Oil consumption | g/kW.h | 1.0 | | | | |
| Direction of rotation | / | Turn right is clockwise, Turn left is counterclockwise | | | | |
| Starting way | / | Air motor, electric motor, double motor start | | | | |
| Overall Dimensions (L*W*H) | mm | 2580×1340×1830 | | | | |
| Lifting height of cylinder | mm | 1260 | | | | |
| Whole machine quality | kg | 3200 | | | | |



Z8170 Series Diesel Engine

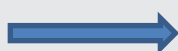


Technical paramater

| Name | Unit | Technical specifications | | | | | | |
|----------------------------|--------|--|---------------------------|---------------------------|---------------------------|---------------------------|---------------------------|---------------------------|
| Model | / | Z8170ZLC Z8170ZLCZ | Z8170ZLC-1 Z8170ZLCZ-1 | Z8170ZLC-2 Z8170ZLCZ-2 | Z8170ZLC-3 Z8170ZLCZ-3 | Z8170ZLC-4 Z8170ZLCZ-4 | Z8170ZLC-5 Z8170ZLCZ-5 | Z8170ZLC-6 Z8170ZLCZ-6 |
| Type | / | Inline, four stroke, direct injection, exhaust turbo charging, Air cooling | | | | | | |
| Cylinder NO. | / | 8 | | | | | | |
| Cylinder diameter | mm | 170 | | | | | | |
| Piston stroke | mm | 200 | | | | | | |
| Compression ratio | / | 14.5 | | | | | | |
| Continuous speed | rpm | 1000 | 1000 | 1000 | 1200 | 1200 | 1200 | 1500 |
| Continuous power | kW | 400 | 300 | 350 | 440 | 480 | 350 | 400 |
| Minimum speed stable work | rpm | 400 | 400 | 540 | 540 | 540 | 540 | 540 |
| Average speed of piston | m/s | 6.67 | 6.67 | 6.67 | 8.0 | 8.0 | 8.0 | 8.0 |
| Mean effective pressure | MPa | 1.322 | 0.992 | 1.157 | 1.212 | 1.322 | 1.964 | 1.102 |
| Fuel consumption | g/kW.h | 196 | | | | | | |
| Oil consumption | g/kW.h | 1.0 | | | | | | |
| Direction of rotation | / | Turn right is clockwise, Turn left is counterclockwise | | | | | | |
| Starting way | / | Air motor, electric motor, double motor start | | | | | | |
| Overall Dimensions (L*W*H) | mm | 3080×1440×2050 | | | | | | |
| Lifting height of cylinder | mm | 1260 | | | | | | |
| Whole machine quality | kg | 4300 | | | | | | |



Z8170 Series Diesel Engine

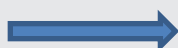
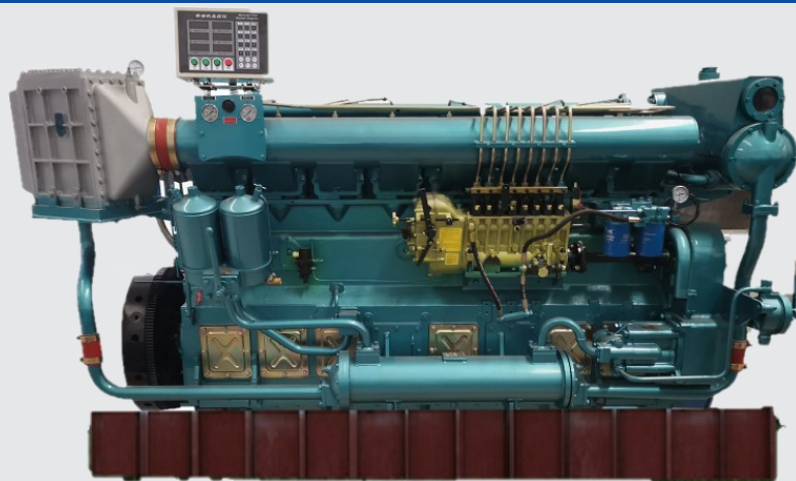


Technical parameter

| Name | Unit | Technical specifications | | | | | | |
|----------------------------|--------|--|---------------------------|---------------------------|-----------------------------|-----------------------------|-----------------------------|-----------------------------|
| Model | / | Z8170ZLC-7 Z8170ZLCZ-7 | Z8170ZLC-8 Z8170ZLCZ-8 | Z8170ZLC-9 Z8170ZLCZ-9 | Z8170ZLC-18 Z8170ZLCZ-18 | Z8170ZLC-19 Z8170ZLCZ-19 | Z8170ZLC-20 Z8170ZLCZ-20 | Z8170ZLC-35 Z8170ZLCZ-35 |
| Type | / | Inline, four stroke, direct injection, exhaust turbo charging, Air cooling | | | | | | |
| Cylinder NO. | / | 8 | | | | | | |
| Cylinder diameter | mm | 170 | | | | | | |
| Piston stroke | mm | 200 | | | | | | |
| Compression ratio | / | 14.5 | | | | | | |
| Continuous speed | rpm | 1500 | 1500 | 1350 | 1200 | 1000 | 1350 | 1500 |
| Continuous power | kW | 540 | 600 | 540 | 528 | 440 | 575 | 660 |
| Minimum speed stable work | rpm | 670 | 670 | 600 | 540 | 400 | 600 | 670 |
| Average speed of piston | m/s | 10 | 10 | 9 | 8.0 | 6.67 | 9.0 | 10 |
| Mean effective pressure | MPa | 1.19 | 1.322 | 1.322 | 1.454 | 1.454 | 1.408 | 1.454 |
| Fuel consumption | g/kW.h | 196 | | | | | | |
| Oil consumption | g/kW.h | 1.0 | | | | | | |
| Direction of rotation | / | Turn right is clockwise, Turn left is counterclockwise | | | | | | |
| Starting way | / | Air motor, electric motor, double motor start | | | | | | |
| Overall Dimensions (L*W*H) | mm | 3080×1440×2050 | | | | | | |
| Lifting height of cylinder | mm | 1260 | | | | | | |
| Whole machine quality | kg | 4300 | | | | | | |



Z8170 Series Diesel Engine



Technical parameter

| Name | Unit | Technical specifications | | | | | | |
|----------------------------|--------|---|-----------------------------|-----------------------------|-----------------------------|-----------------------------|-----------------------------|-----------------------------|
| Model | / | Z8170ZLC-62 Z8170ZLCZ-62 | Z8170ZLC-63 Z8170ZLCZ-63 | Z8170ZLC-64 Z8170ZLCZ-64 | Z8170ZLC-65 Z8170ZLCZ-65 | Z8170ZLC-66 Z8170ZLCZ-66 | Z8170ZLC-71 Z8170ZLCZ-71 | Z8170ZLC-73 Z8170ZLCZ-73 |
| Type | / | Inline, four stroke, direct injection, double exhaust turbo charging, Air cooling | | | | | | |
| Cylinder NO. | / | 8 | | | | | | |
| Cylinder diameter | mm | 170 | | | | | | |
| Piston stroke | mm | 200 | | | | | | |
| Compression ratio | / | 14.5 | | | | | | |
| Continuous speed | rpm | 1350 | 1000 | 1200 | 1200 | 1200 | 1350 | 1500 |
| Continuous power | kW | 575 | 440 | 480 | 440 | 350 | 600 | 660 |
| Minimum speed stable work | rpm | 600 | 400 | 540 | 540 | 540 | 600 | 670 |
| Average speed of piston | m/s | 9 | 6.67 | 8.0 | 8.0 | 8.0 | 9.0 | 10 |
| Mean effective pressure | MPa | 1.408 | 1.454 | 1.322 | 1.212 | 0.964 | 1.468 | 1.454 |
| Fuel consumption | g/kW.h | 196 | | | | | | |
| Oil consumption | g/kW.h | 1.0 | | | | | | |
| Direction of rotation | / | Turn right is clockwise, Turn left is counterclockwise | | | | | | |
| Starting way | / | Air motor, electric motor, double motor start | | | | | | |
| Overall Dimensions (L*W*H) | mm | 2854×1210×2090 | | | | | | |
| Lifting height of cylinder | mm | 1260 | | | | | | |
| Whole machine quality | kg | 4300 | | | | | | |